



4-H Summer Fun!

MORRIS COUNTY 4-H FAIR

July 20-24, 2016

Chubb Park, Chester NJ

Please join us! Be a part of
the Morris County 4-H Fair!
Enter your projects at the Fair!

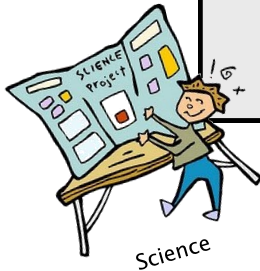
Do you qualify?

You must meet the following criteria:

- You live in Morris County
- You have completed Kindergarten
- You are not more than one year past high school



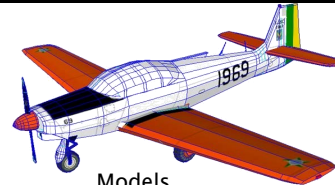
Horticulture



Science



Horticulture



Models



Fine Art



Needlework

Projects can range from Arts & Crafts to Horticulture to
Photography to Science to Woodworking & *more!*

- *Enter your projects and we will display them at our Fair for all our fairgoers to view during the 4 days of our Fair*
- *See the back of this flyer for detailed information on the many different projects you can enter*

4-H is a **community** of **young people** across
America who are learning **leadership**,
citizenship and **life skills**.

4-H is currently seeking caring adult volunteers interested in becoming 4-H leaders in a variety of project areas.



For more information about **Morris County 4-H**, please contact us --

<http://morris.njaes.rutgers.edu/4h>

973-285-8301

4hmorris@njaes.rutgers.edu



Here are some of the project areas that you can enter. Your entries can be projects you have made at home or in school.



Child Care

Items relating to childcare and babysitting

Clothing and Textiles

This can be a garment or non-garment item

Computer Related Art

Categories include graphic design, package design, web design, illustration or other computer related art

Crafts

Items can include ceramics, fabric & yarn, crafts made from a kit or own design

Fine Art

Art must be brought to the Fair **READY TO HANG** (except sculpture). **NO GLASS!**

Food and Nutrition

Categories include displays, menus, and place settings, dairy foods, international foods, frozen foods, baked goods, canned foods, yeast breads and roll and other foods

General Sciences

Categories include forestry, conservation, entomology, marine science, biology/ecology, and earth science/physical science

Horticulture

Categories include indoor potted plants, flowers, plant groupings, vegetables, arrangements, vegetable plants in pots, corsages, fruits and berries, and ornamentals

Literary Work

Categories include poetry, fiction, non-fiction and song lyrics

Models

This can include all types of model airplanes, rockets, cars, etc.

Model Horses and Horsecraft

Items include horse or tack made by owner or a horse science display

Needlework

Categories include knitted item, crocheted item, needlepoint item, embroidery and counted cross stitch, crewel, appliqué, quilting, and rugs

Photography

Pictures can be digital or film photography

Woodworking

This can include all types of woodworking; own design or from a kit

Poultry Show

Chickens, turkeys, ducks, guinea fowl, doves, home-laid eggs

Rabbit and Small Animal Show

Rabbits, guinea pigs, hamsters, mice, rats, gerbils, ferrets, chinchillas

Herpetology Show

Lizards, snakes, frogs

Open Pet Show

Come and show any animal you wish to bring to the Fair

Dress-A-Pet

Decorate your pet or its cage

Talent Show

Come and showcase your talent! Acts may consist of a single person or a group.

For detailed project entry information, see the 2016 4-H Fair Entry Book on the Morris County 4-H website: <http://morris.njaes.rutgers.edu/4h/Fair.html>

Cooperating Agencies: Rutgers, The State University of New Jersey, U.S. Department of Agriculture, and County Boards of Chosen Freeholders. Rutgers Cooperative Extension, a unit of the Rutgers New Jersey Agricultural Experiment Station, is an equal opportunity program provider and employer.

The 4-H Youth Development Program is part of Rutgers Cooperative Extension of Morris County. 4-H educational programs are offered to all youth, grades K-13, on an age appropriate basis, without regard to race, color, sex, national origin, or disability. If special accommodations are needed, please contact the 4-H office.